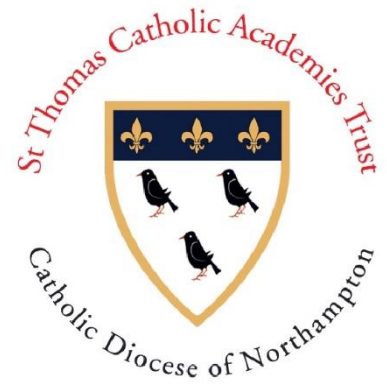




# Cardinal Newman

## CATHOLIC SCHOOL



# Information for New Students

2025/2026

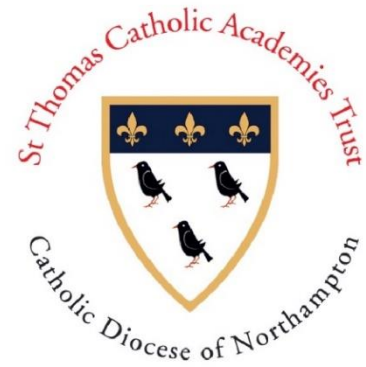


Together towards our Lord through Learning, Love and Faith



# Cardinal Newman

## CATHOLIC SCHOOL



Welcome to Cardinal Newman Catholic School. We are delighted that you will be joining us in September, and we will do all that we can to make your years with us happy and fruitful. Your Head of Year, Mrs Kirby has been busy preparing to welcome you to our school and along with your tutor, they will ensure you have everything you need to be successful and safe. You will be in a tutor group with your own tutor who will be there every day to help you and you will make friendships that will last a lifetime.

Our mission statement is 'Together towards our Lord, through Learning, Love and Faith', this will become very familiar to you as will our 'Newman Way' which is our collective ethos and celebration of your God-given talents!

We want to ensure that you learn the things that you don't know already, build on what you have learned in primary school and flourish and achieve your potential.

You are starting a really exciting journey, and we will support you through every step.

You and your parents and carers have chosen this school because they want the very best for you, as do we. Remember that first impressions are important; be polite, respectful, behave well and wear our uniform with pride.

Looking forward to meeting you!

Warm regards

Helen Fay  
Headteacher



Together towards our Lord through Learning, Love and Faith

## Our Aims

- *To be a Catholic community recognised by our love of God and our neighbour.*
- *To be a community of truth, reconciliation justice and peace.*
- *To celebrate and enjoy our learning by using our God given talents to achieve our very best.*
- *To value and respect ourselves and all others.*
- *To help students grow into adults whose Christian faith inspires their lives.*
- *To respond positively to the contributions, aspirations and needs of all staff.*
- *To work with our families, parishes, partner schools and the wider community.*



# We are here for you at Cardinal Newman...

## The Senior Leadership Team (SLT)



Mrs Fay – Headteacher



Miss Daly - Deputy Headteacher



Mr Martin - Deputy Headteacher

Mrs Curtis



Assistant  
Headteacher

Mr Hegarty



Assistant  
Headteacher

Miss Lymer



Assistant  
Headteacher

Miss Dowdeswell



Assistant  
Headteacher

Mr Launay



Assistant  
Headteacher

Mrs Hutcheson



Assistant  
Headteacher

## Head of Year Team

Mrs Kirby



Head of Year 7

Mrs Alowoto



Head of Year 8

Miss Keane



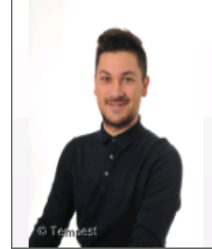
Head of Year 9

Mr Kirby



Head of Year 10

Mr Mulholland



Head of Year 11

Miss Blackbird



Head of N6

# We are also here for you at Cardinal Newman

## The Safeguarding Team

Mrs Fay



Deputy Designated Safeguarding Lead

Mr Forni



Designated Safeguarding Lead

Miss Daly



Deputy Designated Safeguarding Lead

Miss Bradshaw



Deputy Designated Safeguarding Lead

Mrs McGrath



Deputy Designated Safeguarding Lead

Mrs Hutcheson



Deputy Designated Safeguarding Lead

Family & Friends

Family worker

School nurses

Subject Teachers

Year 11 prefects

Peer supporters

Who will be there for me?



Teaching Assistants & HLTAs

School Chaplain

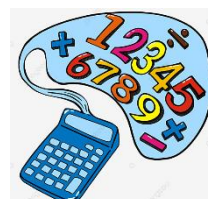
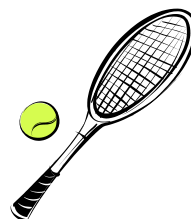
Reception & Admin staff



## The School Day

There are 5 lessons per day with the school day ending at 3:30pm.

|                                   |                   |
|-----------------------------------|-------------------|
| <b>Registration &amp; Reading</b> | 8:50am – 9:20am   |
| <b>Prayer Time</b>                | 9:15am – 9:20am   |
| <b>Period 1</b>                   | 9:20am – 10:20am  |
| <b>Period 2</b>                   | 10:20am – 11:20am |
| <b>BREAK</b>                      | 11:20am – 11:40am |
| <b>Period 3</b>                   | 11:40am – 12:40pm |
| <b>Period 4</b>                   | 12:40pm – 1:40pm  |
| <b>LUNCH</b>                      | 1:40pm – 2:30pm   |
| <b>Period 5</b>                   | 2:30pm – 3:30pm   |



Below is a simplified example of a Year 7 timetable:



|        | Tutor Time and Prayer Time | Period 1               | Period 2                | Break                   | Period 3                  | Period 4                   | Lunch                     | Period 5                  |
|--------|----------------------------|------------------------|-------------------------|-------------------------|---------------------------|----------------------------|---------------------------|---------------------------|
| Monday | 8:50 – 9:20<br>30 min      | 9:20 - 10:20<br>1 hour | 10:20 - 11:20<br>1 hour | 11:20 - 11:40<br>20 min | 11:40 - 12:40pm<br>1 hour | 12:40pm - 1:40pm<br>1 hour | 1:40pm - 2:30pm<br>50 min | 2:30pm – 3:30pm<br>1 hour |
|        |                            | PE                     | English                 |                         | Art                       | History                    |                           | Science                   |

## Your Tutor Group

During tutor time the following things take place:

- Morning prayer
- Class register
- Collection of reply slips
- Skill building activities
- Quiet reading
- Uniform check
- PSHE



## Our Pupil, Parent and Pastoral Partnership

When you begin at Cardinal Newman School in September, you become part of a team. That team is your **Tutor Group**, and you will meet each morning at 8.45am at line up on the tennis courts. Your Form Tutor is very important and will have a special link with you and your parents / carers over the next five to seven years.

**Mrs Kirby** is the Head of Year 7 and will be available in the tutor area to help with any difficulties. All Year 7 tutor groups and the Head of Year's office will be based in Littlemore House (the RE block).

Did you know that there are 9 different tutor groups in Year 7?

Appointments and group work are available to support anyone who is not settling in as well as expected, alongside routine meetings and check-ins within lessons.

### Subjects you will study:

English, Maths, Science, Computer Science, Food & Nutrition, French, Physical Education (PE), Geography, History, Art and Religious Education (RE).

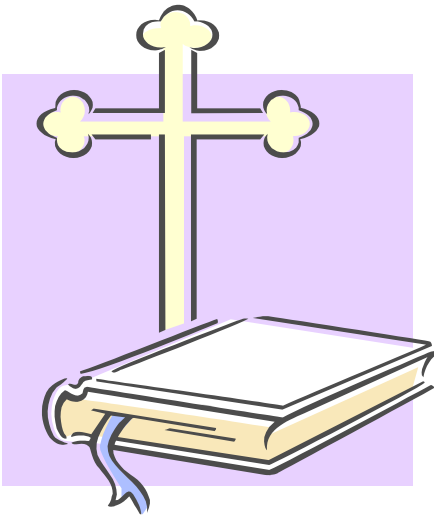
## Your Form Tutor

Your Tutor will monitor your achievements and your behaviour. Your tutor will meet with you if necessary and will contact your parents / carers when you do well or if your behaviour is causing concern.

Your Tutor is the first person you should go to if you have any problems or concerns. He or she is there to listen to you and be the first point of contact for your parents.

In the first term there will be a Key Stage 3 induction evening when your parents / carers can come and discuss how you are settling in.

During the year there will be a Parent's Evening when your parents can meet your subject teachers.



## Chaplaincy

The Chaplain of the school is called **Jane**. She is another member of staff who is there for you if you need any help. We have our very own chapel which you can visit via the Reception area. Jane's office is next to the chapel.

In the first term, Jane organises a Retreat Day for each tutor group. This will give you the opportunity to enjoy fun activities with your new classmates and get to know each other a little better.

Jane will often lead our school Masses and Liturgies which take place in the hall. Rather than visiting a church for these services, we bring church to us!



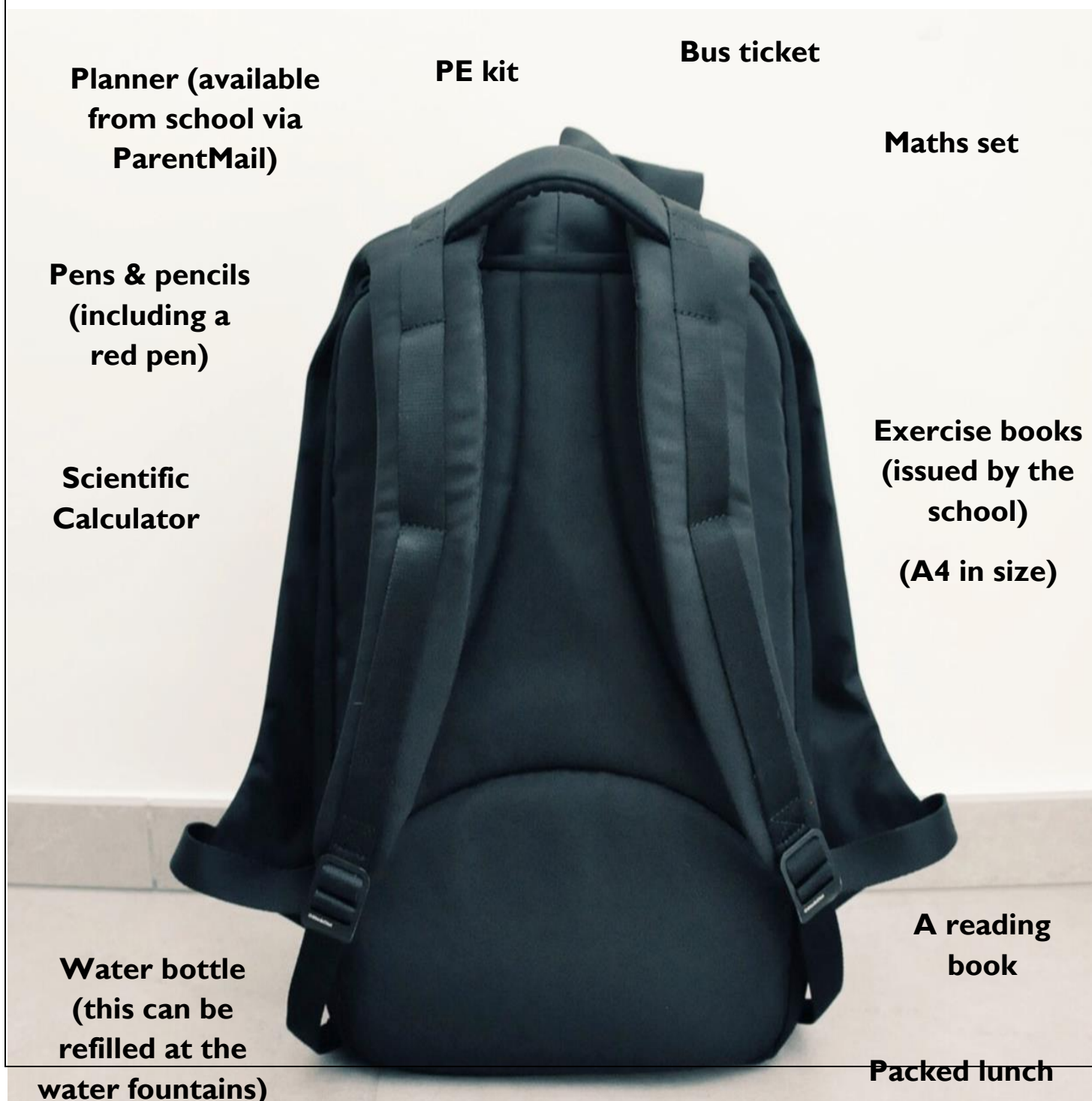


## Your School Bag

Below are **examples** of the items you may need to bring with you to school. Please bring a rucksack / backpack style school bag which is big and strong enough to hold these items. No small bags or handbags are allowed.

It is a good idea to pack your school bag by checking your timetable the night before to see what equipment you will need to bring for the lessons you have the next day.

Extra items to carry such as PE kit, ingredients for cooking or footballs can be stored in your locker if you choose to have one. Lockers are in the Year 7 area, near your tutor room but these may not be issued before October half term.



**Planner (available  
from school via  
ParentMail)**

**PE kit**

**Bus ticket**

**Maths set**

**Pens & pencils  
(including a  
red pen)**

**Scientific  
Calculator**

**Exercise books  
(issued by the  
school)  
(A4 in size)**

**Water bottle  
(this can be  
refilled at the  
water fountains)**

**A reading  
book**

**Packed lunch**



# Fun & Rewards!



Here are just some examples of things to be excited about!

## Achievement

Good work and effort are recognised at here at Cardinal Newman. Each time you behave well in a lesson, do a great piece of work or come up with a great idea in a discussion, you will earn an Achievement Point. These points will build up over the terms and certificates, badges and prizes are given to those with the most points. Any time you demonstrate that you are following the 'Newman Way' such as being kind, faithful or generous, you will be rewarded with a Character Point. Similarly to achievement points, these will build up and prizes will be given to those who receive the most points!

## Theatre Trips

Year 7 get many opportunities to watch a live show after school with the Drama department, either locally or in the West End!

## Year 7 Retreats

In the first term, you will spend a whole day out of school with your tutor group for some fun team building activities and a chance for some self-reflection.

## Extra Activity clubs

There are many extra-curricular activities that you can take part in including, choir, basketball, rugby, netball, football, Gaelic football, hockey, dance, music, homework, boardgames, resistant materials, library, and debate club.

## Sponsored Walk

Every October the whole school will raise money for their chosen charity by walking around Warden Hills. That's right...the whole school will have time off lessons to walk through the Autumn leaves and chat to their friends for a great cause.

# School Uniform for Years 7-10

Your parents/carers will receive a flyer and booklet which shows the correct items of school uniform. You must always wear the uniform exactly as described. Variations will not be accepted and costs parents/carers extra money when they have to buy more items to follow the school uniform properly. Please do check the items of school uniform carefully and check before you buy anything. Just because you buy something from the 'school uniform department' in a shop does not mean it meets our school expectations. For example, our school skirt has embossed lettering 'NEWMAN' on it to ensure consistency.

## Below is a list of general School Uniform Rules:

- Plain black smart school shoes - No canvas shoes, trainers or boots above the ankle and no high heels.
- No denim, hoodies or sweatshirt style/material tops.
- Outdoor coats must be plain and preferably dark in colour – we are however sympathetic to the ***Be Bright, Be Seen Campaign*** and will not object to lighter colours.
- Only a pair of small stud earrings (one earring per ear), one small cross and chain and one small ring allowed.
- No body or face piercings. No acrylic / false or long nails. No false eyelashes.
- No extreme haircuts / styles; no coloured hair other than natural colours. Make-up must be discreet. No bandanas or other decorations such as bows or flowers; hairbands must be dark and plain.
- School Bag – large enough to fit A4 exercise books and mini whiteboard.

This list is not exhaustive, and the school may make further additions to this list as deemed necessary. **All items of clothing should be clearly marked with the student's name (including ties).**

All labelled items of main school uniform are available through Prestige, Unit 2, Barton Industrial Estate, Faldo Road, Barton Le Clay, Beds, MK45 4RP.

Please note that no other retailer has been approved to sell badged items of uniform.

Prestige has an online booking system for appointments. Please visit their website to book a slot. We advise that you book early as slots become very limited in late July and August.

## Feeling unwell?



If you feel unwell you should ask your teacher to sign your planner giving you permission to go to the Medical Room. If you need to go home, the staff in the Medical Room will phone home for you. Do not call home yourself or leave school unless you have gone through this procedure.

## Transport



There are various public buses that provide a service to and from our school. Your parents/carers have received information about how to purchase tickets. Weekly passes can be purchased from the bus driver or the Arriva mobile app. More information can be obtained from Arriva on **0844 800 441**.

We have a large area to lock up bikes, but you must make sure that it is properly and securely padlocked and that you wear a helmet.

## Attendance

Good attendance and punctuality are very important to be successful in school. We expect everyone to have 96% or above attendance. Missed lessons may be caught up on, but that is never as good as being present for the lesson. If you are absent from school **your parents/carers must report this using their ClassCharts app on the first day of absence**. You are not allowed to take holidays in term time.

## School lunch

You may like to bring a packed lunch to school, but we do serve delicious homemade school meals and desserts in our dining hall. A variety of sandwiches, pasta, salads, pastries, and drinks can also be purchased from the canteen during break and lunchtimes.



We use '**cashless catering**' here at Cardinal Newman. Your thumb is scanned when you first join the school. This becomes the password to your lunch account. When you come to pay for your lunch, all you need to do is scan your thumb! A small number of students choose pin codes to be used instead of thumb scans, but these can be tricky to remember.

Our kitchen staff cannot accept coins or notes, only money put into your account by your parents/carers via ParentMail can be used (your parents/carers will receive more information about this).

## Lost property

Please take care of your own possessions and respect each other's property. It is essential that you label all your clothing and equipment with your name and tutor group. Lost property is returned when possible (when it is labelled!). If you find something, please hand it to your teacher. If you lose anything, search thoroughly yourself before asking at reception.

## Mobile Phones

Mobile phones are allowed but, they **must be switched off before you reach the school gates and either placed in your bag or handed into reception for safe keeping.** Mobile phones, smart watches and any form of headphone must not be SEEN or HEARD as they cannot be used at any time during the school day. They will be confiscated if they are seen or heard (you do not have to be necessarily using it). You are **only** allowed to use them after 3:15pm once you have left the school building.

If you need to make a telephone call during the school day, you should go to your tutor or Mrs Kirby to ask permission and use the phone in reception at. In an emergency, please go straight to Reception at break or lunch. The school is not responsible for the loss or theft of a mobile phone and will not investigate any such incidents.



## Top Tips from Our Students:

1. Use an alarm clock.
2. Write your homework in your planner.
3. Do your homework the same day it is set.
4. Put your name on everything!
5. Keep your valuables in a safe place.
6. Pack your school bag the night before.
7. Have a good breakfast to feed your brain and to give you energy.
8. Be friendly, respectful and polite.



**A 'Hello' from...**

# Maths



## **Welcome to the Mathematics department...**

Welcome to the Maths department at Cardinal Newman Catholic School. Our school is special, our department is special. We are so lucky to work with the amazing students that we do and teach the subject that we love and we cannot wait for you to join us!

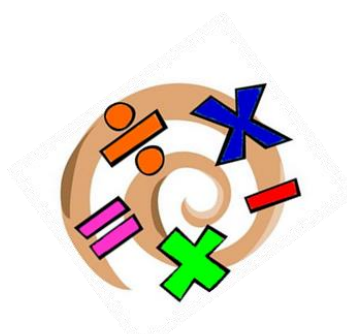
At the start of year 7 you will be put into a class based on where you are in maths right now. Working in a set means that the lessons can go at the correct pace for you, and you will not be left behind or held back. It does not matter what set you are in as long as it is the right one for you. We truly believe that all students can do maths and are good at maths - we just need to find the best way and speed to teach you!

Homework is set weekly on Sparx Maths, you will be given your login in your first few weeks in school and explained how to use the system then.

For maths you need some extra equipment that you may not need for your other subjects. Compulsory equipment for every maths lesson is:

- A scientific calculator (we recommend the Casio FX-83GTCW)
- A ruler (15cm is fine but it must have numbers on!)
- A protractor
- A pair of compasses.

All of this equipment can be bought from major supermarkets and stationery shops. Please make sure that you have all of this before school starts - your first few lessons in maths will be on using your calculator properly which will be very hard to do if you do not bring it!



A 'Hello' from...

# English

Reading is a  
passport to  
countless  
adventures.

## Welcome to the English department...

*William Shakespeare, Charles Dickens and our collective of modern-day poets.*



Join us for a haunting of the Past, Present and Future as we celebrate the classic Victorian Christmas story of the cruel and selfish Mr Scrooge. Witness his journey of redemption as he learns the true meaning of Christmas and melts the solid block of ice which encases his heart.

From there, we will stride through the Elizabethan battlefields as the scheming and manipulative Lady Macbeth endeavours to put her husband on the throne of Scotland through nefarious means. We will bring to life the voices of these characters as we dramatise the Witches deceitful prophecies that lead to Macbeth's eventual downfall.



Our journey doesn't end on the stage however, as we come together on World Book Day to characterise the heroes, villains, and sidekicks of our favourite stories.



To round off our literary adventures of novels and plays, we step into the new world of rhyming and word play. Read poems about our diverse culture as well as the roots of mythology which will help set you up for the road to Year 8.

A 'Hello' from...

# Science



## Welcome to the Science Department!

In year 7 you will be beginning to learn using the principle of 'the big ideas' in Science, which will enable you to connect concepts. Some of which you may have started learning about in your primary schools. For example, the big ideas of **Organisms** - to expand on your knowledge of the body and the different body systems we have, to look even smaller at individual cells found in both animals and plants.

Other ideas lead on from areas you have been introduced to e.g.

- **Matter** develops ideas about separating mixtures to include the arrangement of particles in solids, liquids and gases.
- **Reactions** builds on the knowledge you developed when looking at reversible & irreversible changes as well as introducing acids & alkalis.
- **Forces** extends your knowledge about the effects of gravity, air resistance, water resistance and friction and looks at how forces interact to affect the direction and speed of different objects.
- **Ecosystems** builds on the work you have done on living things, food chains & habitats & develops your understanding of the importance of plants.
- **Genes** looks at how living organisms have huge variation between species & also within a single species, making us all unique.
- **Waves** to examine the properties of both sound and light waves in allowing us to hear and see objects.

All ideas will work on things you need to **Know**, how you then use this information to **Apply** to an unfamiliar situation, & some more challenging objectives where you will again use the knowledge you have to **Extend** your thinking through making comparisons, evaluations & predictions.

Most of the big ideas have lots of opportunity for scientific practical work, to develop your practical skills, however all will require use of **thinking skills, literacy & numeracy** to ensure that you attain well & reach your full potential.

Resilience is the Habit of mind that we focus on in Science so you will learn to:

- **Be Persistent** (Einstein did not give up when developing his theory of Relativity)
- **Strive for accuracy** (Halley had to prove his comet was the same one that kept coming back again and again)
- **Gather data through all your senses** (Jenner & Pasteur used all this when working with microbes)
- **Remain open to continuous learning** (Rutherford & Dalton had to change ideas on atomic structure as new discoveries were made)

A 'Hello' from...

# Design Technology, Food and Nutrition

## Welcome to the Design Technology Department!

At Cardinal Newman, you will have Design lessons that are taught on a carousel. This means you will spend a half term experiencing each of the following Design areas:

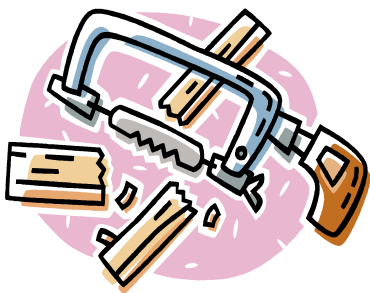
- ☐ **Food and Nutrition:** preparing & cooking foods: plan and make a balanced meal and a baked product.



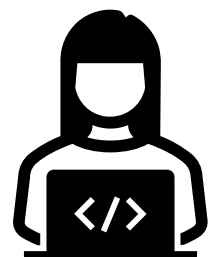
- ☐ **Textiles:** learning and using the sewing machine; design and make a pencil case.



- ☐ **Resistant Materials:** working with metal, wood and plastic, learning to use the tools and equipment correctly; design and make a pencil holder in Year 7.



- ☐ **Graphics:** learn about what it is like to be a Graphic Designer and produce your own bag tag using Computer Aided Design.



**A 'Hello' from...**

# **Drama**



## **Welcome to the Drama Department!**

Drama lessons will help you learn transferable skills that can be used in all your other subjects such as communication, group work and public speaking. Exploring a number of different topics through role play, rehearsals, devising, scripted and performance will be exciting and engaging.

In Year 7, you will explore Drama through a variety of exciting and engaging topics such as Performance Skills, Pantomime and Harry Potter with one lesson a week. You will develop your communication skills, your creativity and build your confidence, working in groups to produce performances. You are assessed in three areas in Drama, rehearsal, performance and evaluation. When you are performed your work, you will get a chance to review your work and set yourself clear targets for your next piece of practical work and you will evaluate the work of others through peer reflection.

### **Extra-Curricular Activities**

Year 7 Drama Club – during the Autumn term this takes place each week during electives and here you can make new friends from your year. The group will perform in December, inviting parents & carers to watch.

School Shows, workshops and Theatre Trips – you will have the opportunity to attend drama trips during your time at Cardinal Newman. This can include going to the theatre to watch shows in the West End!

Towards the end of the academic year, the Performing Arts department put together a whole school production where students can audition to take part and have fun rehearsing, performing, and making friends. You can also take on a role backstage using the skills learnt in Tech club to support the production of the show.



**A 'Hello' from...**

# **PE**

## **Welcome to the PE Department!**

Welcome to the Physical Education Department at Cardinal Newman Catholic School. Physical Education is a key part of school life at Cardinal Newman Catholic School, where we aim to provide students with the skills, knowledge, and desire to lead healthy, active lifestyles, which will enable lifelong participation in Physical Activity. Within lessons we look to develop students' invaluable life skills, such as leadership, confidence, communication, problem solving and resilience. These are taught through a variety of sporting activities including Football, Rugby, Netball, Basketball, Athletics, Rounders, Cricket, Badminton and OAA.

Our PE staff are very passionate about developing students' interest and ability in a variety of sports, therefore alongside your 2 lessons a week of core PE in year 7, you will also have an opportunity to join the many sports enrichment clubs and the opportunity to represent the school in competitions and fixtures.

In order to access our amazing PE lessons and enrichment clubs you will need to have your Cardinal Newman PE kit ready, this includes:

- CNS PE Polo-Shirt
- CNS PE Training top (especially for the winter months)
- CNS PE Tracksuit bottoms or shorts
- Trainers & Football boots

**We look forward to seeing you all in September!**



**A 'Hello' from...**

# **French and German**

## **Bonjour! Bienvenue! Guten Tag! Willkommen! Welcome to the French and German Department!**

During Year 7 we will continue to build upon and extend the learning undertaken in your primary schools whilst introducing you to some brand-new topics such as:

- **Introducing yourself, family and friends**
- **School**
- **Local area and describing where you live**
- **Hobbies and activities you do**
- **Food and drink**



You will get plenty of opportunity to practise the four key skills of listening, speaking, reading and writing in lessons which will all prepare you for further study in the school.

How much do you know already? Can you solve the puzzles?

Je m' \_\_\_\_\_  
un, deux, t \_\_\_\_\_, q \_\_\_\_\_

bleu, blanc, r \_\_\_\_\_

chien, chat, p \_\_\_\_\_

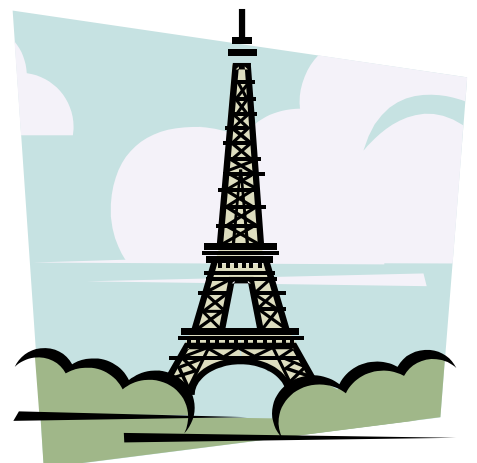
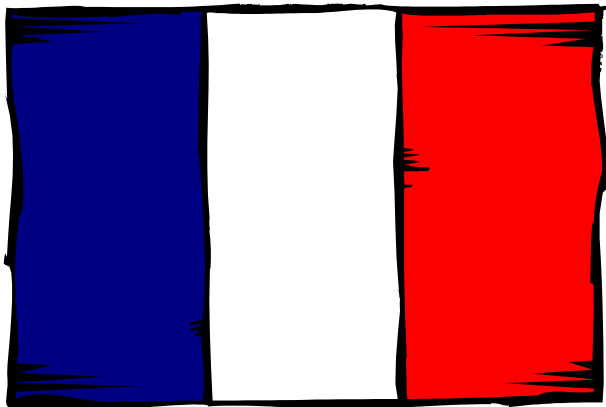
pomme, fraise, b \_\_\_\_\_

Ich hei \_\_\_\_\_

Gut \_\_\_\_\_ Tag!

eins, zwei, drei, v \_\_\_\_\_

Katze, H \_\_\_\_\_, Fisch, Kaninchen



**A 'Hello' from...**

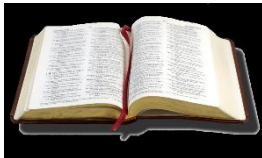
# **RE**

## **Welcome to the RE Department!**

Welcome to the Religious Education Department at Cardinal Newman Catholic School. Besides being one of the four core subjects, RE is the heart of our school. The department offers you the unique opportunity to learn about God and His creation. Every RE lesson begins with prayer and sometimes students are given the opportunity to take lead. RE lessons are varied and engaging; you will take part in debates, role plays, popcorn reading, group work and competitions. We run an advent calendar competition in the first term of year 7 where the winners get to take home big prizes including vouchers to spend on whatever they like. As you move on through KS3 and 4 you should have developed key skills that you need at A level and University. In year 8, we run a Philosophy club that allows students a chance to discuss and debate key questions of life. Some of these students should go on to take Ethics and Philosophy at A-level. This is very important for anyone who wishes to become a great thinker in the near future. You will also get an opportunity to visit the Chapel during some of your RE lessons.

Some topics in Year 7 include:

### **The Word of God**



### **The Sacraments**



### **Leadership in the Church**

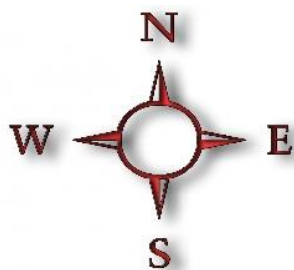


### **The Church's Mission**



**We look forward to seeing you all. God bless you!**

# Finding Your Way Around



New pupils often worry about getting lost when they start at Cardinal Newman. It is quite a large school with lots of different classrooms and teaching blocks, giving you fantastic facilities and lots of variety to your school day.

It is actually quite easy to get lost when you start Year 7, because of this, there will be **Peer Supporters** in each tutor group. They will guide you around from lesson to lesson, from playground to classroom, from classroom to canteen...all day long for the first TWO WEEKS!

The Year 7 Pastoral Team who you will see every day consists of:

|                              |     |   |  |
|------------------------------|-----|---|--|
| Mrs Kirby                    |     | Head of Year,<br>Teacher of History               | FWelch@cardinalnewmanschool.net  |
| Mrs Archer/Mr King           | 7HU | Tutors, Teacher of<br>Geography/Teacher<br>of RE  | farcher@cardinalnewmanschool.net /<br>aking@cardinalnewmanschool.net     |
| Mr Bonsu                     | 7W  | Tutor, Teacher of<br>Maths                        | EBonsu@cardinalnewmanschool.net  |
| Mrs Manning-Smith            | 7H  | Tutor, Teacher of<br>RE                           | TManning@cardinalnewmanschool.net  |
| Miss McAree                  | 7M  | Tutor, Teacher of<br>Humanities and<br>Psychology | amcaree@cardinalnewmanschool.net   |
| Mrs Pillinger/<br>Miss Adzih | 7V  | Tutors, Teachers of<br>Maths                      | LPillinger@cardinalnewmanschool.net /<br>NAdzih@cardinalnewmanschool.net |
| Mrs Spencer                  | 7A  | Tutor, Teacher of<br>MFL                          | ASpencer@cardinalnewmanschool.net  |
| Ms Pratten                   | 7G  | Tutor, Teacher of<br>English                      | JPratten@cardinalnewmanschool.net  |
| Ms Kouser                    | 7GR | Tutor, Teacher of<br>Art/Resistant<br>Materials   | KKouser@cardinalnewmanschool.net   |
| Mr Sarsfield                 | 7HE | Tutor, Teacher of PE                              | BSarsfield@cardinalnewmanschool.net                                      |

# Term Dates 2025 - 26

## **Advent Term:**

Inset Day 1: Monday 1 September 2025

Inset Day 2: Tuesday 2 September 2025

Term Begins **for Years 7 & 12 only:** Wednesday 3 September 2025

Term Begins for others: Thursday 4 September 2025

Half Term: Monday 20 October – Friday 31 October 2025

Last day of Term: Friday 19 December 2025

## **Lent Term:**

Term Begins: Monday 5 January 2026

Half Term: Monday 16 February - Friday 20 February 2026

Last day of Term: Friday 27 March 2026

*(Easter Sunday – Sunday 5 April 2026)*

## **Pentecost Term:**

Inset Day: Monday 13 April 2026

Term Begins: Tuesday 14 April 2026

May Bank Holiday: Monday 4 May 2026

Half Term: Monday 25 May - Friday 29 May 2026

Last Day of Term: Friday 17 July 2026



## **The School Prayer**

*Guide us this day, Lord our Father,*

*In your love, for this day is yours.*

*May we share the love we have for you with others, for all  
mankind is yours.*

*Help us with our work this day,*

*For our work is yours.*

*May we love and respect ourselves,*

*For we are yours.*

*Amen*



**Cardinal  
Newman**  
CATHOLIC SCHOOL

